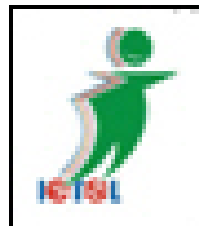


# ATAL INDORE CITY TRANSPORT SERVICES LIMITED (AICTSL)

## Current Status & On-going Initiatives



Centre for  
Sustainable  
Transport



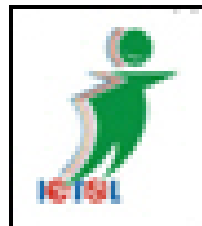
# AICTSL - BRIEF HISTORY



- A company “Indore City Transport Services Ltd” was incorporated to operate and manage the public transport system on 1 December 2005.
- Company formed with paid up capital of 2.5 million INR (55,555 USD).
- Six members from various government agencies become Board of Directors.
- A first on Public Private Partnership Model in India.



Centre for  
Sustainable  
Transport

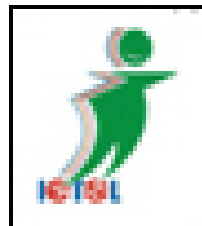


# Bus Operations

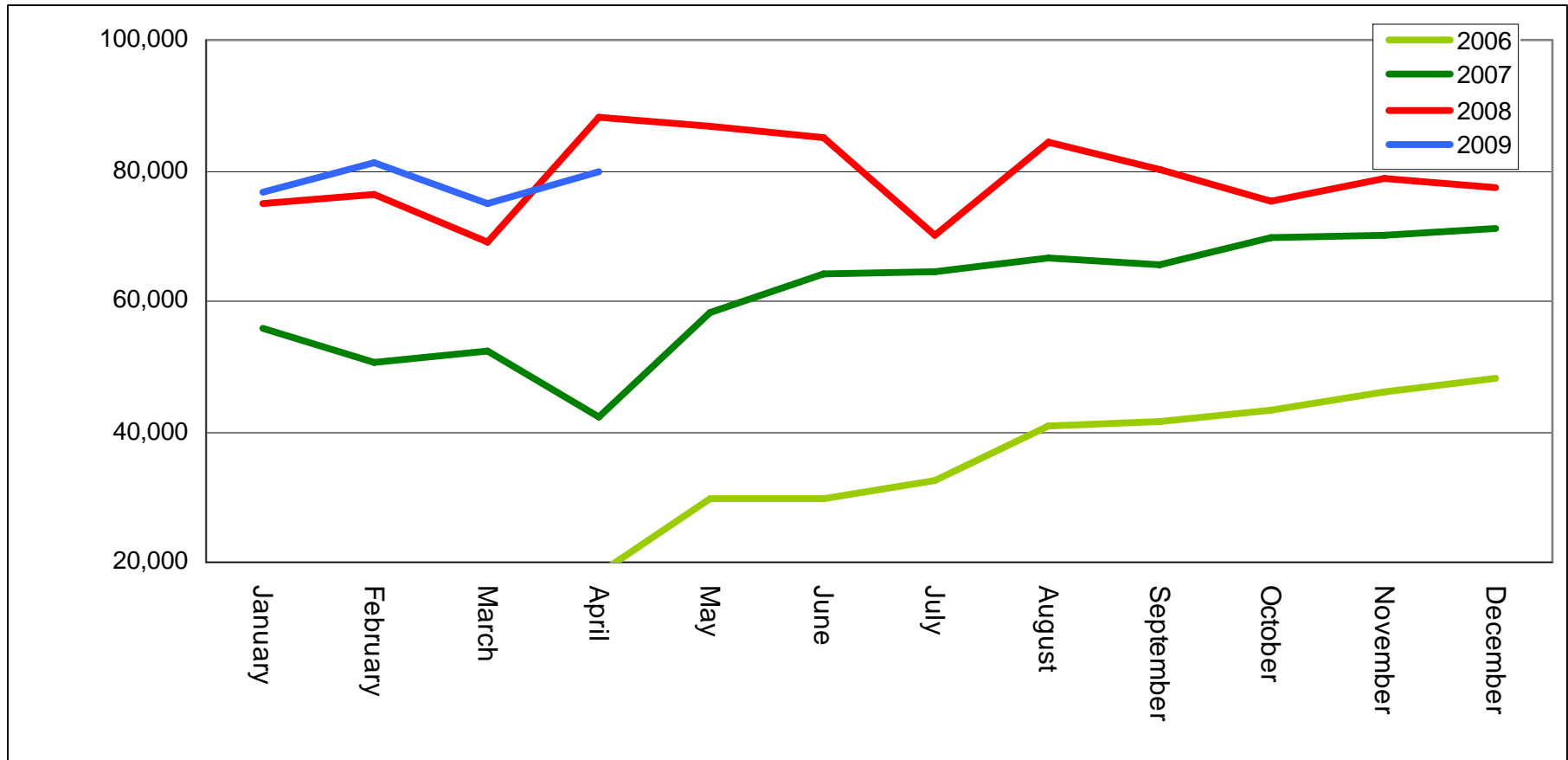
- Some of the key statistics and system features are
  - 24 routes (22 intra city & 2 suburban)
  - 110 buses (96 on intra city & 14 on suburban routes)
  - 277 km in length
  - 90,000-110,000 passengers per day
  - Change in public transport mode share from 16% to 21%
  - Bus operations, fare collection, GPS based vehicle tracking delivered by vendors contracted through competitive tendering
  - GPS based vehicle tracking and monitoring
  - Electronic devices for fare collection



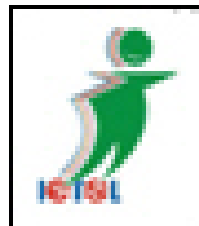
Centre for  
Sustainable  
Transport



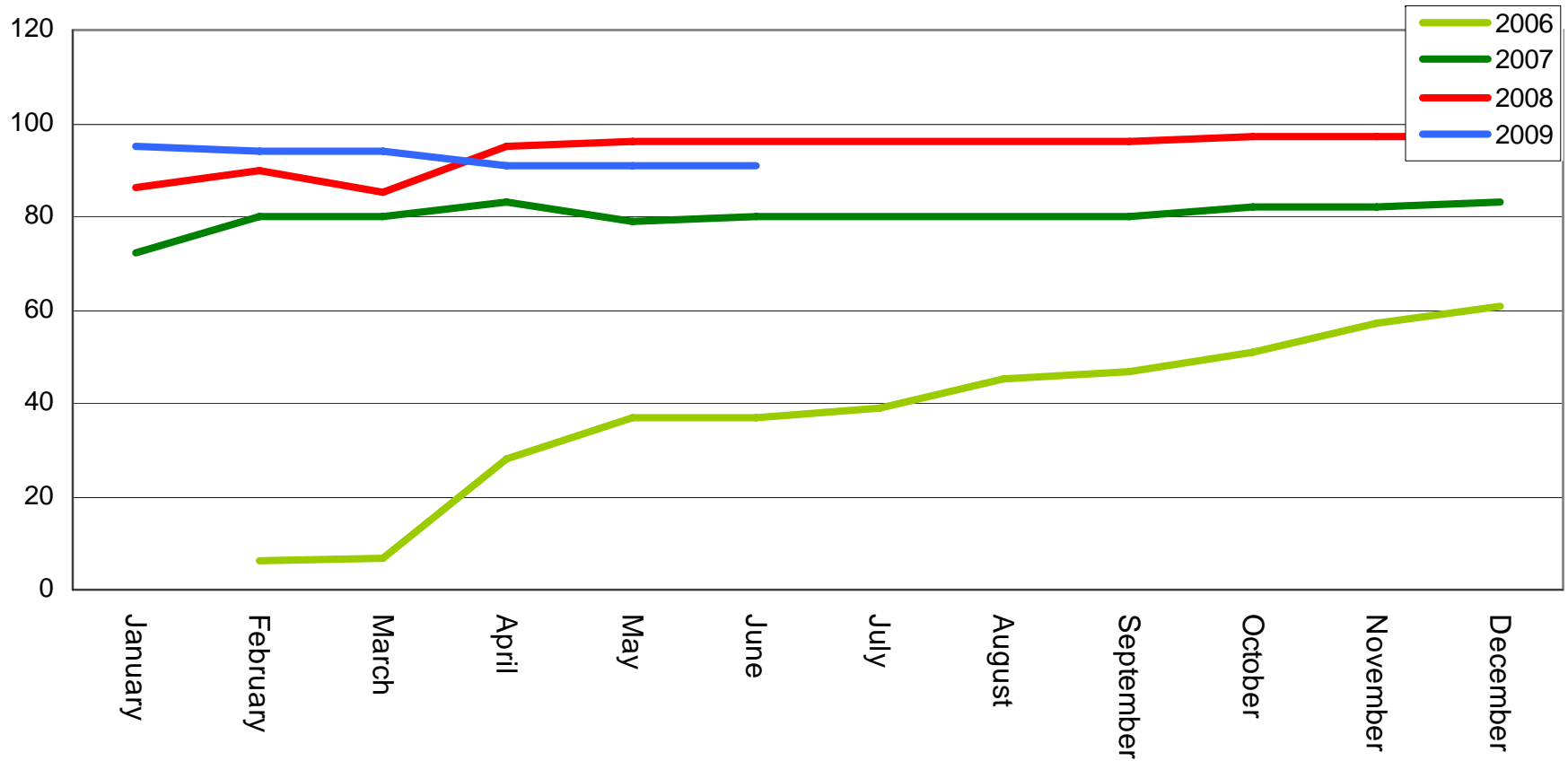
# Patronage : Passengers per Month since Inception



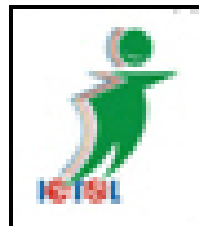
Centre for Sustainable Transport



# Patronage : Passengers per Month since Inception



Centre for Sustainable Transport



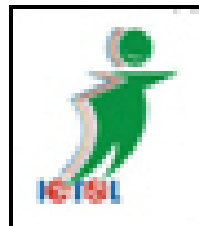


# Ongoing Initiatives at AICTSL

- Performance monitoring system with penalties and incentives to improve quality of service
- Financial assessment of the current system
- Procurement of buses under JnNURM (175 Buses)
- Procurement of Intelligent Transport Systems under the GEF grant from World Bank.
- Institutional strengthening and capacity building at AICTSL
- Carbon Finance under Clean Development Mechanism
- Construction of 3 depots and Installation of CNG stations



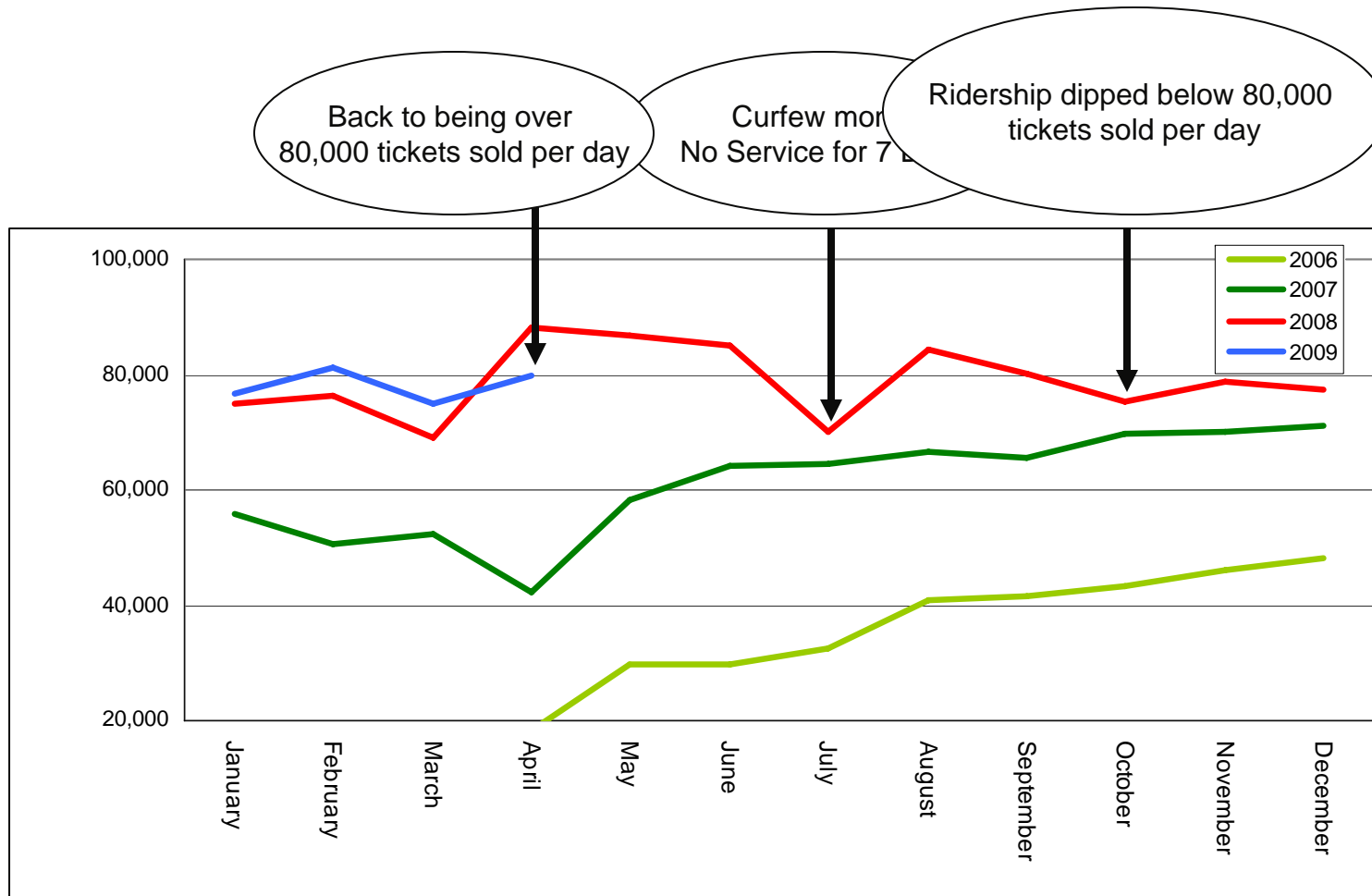
Centre for  
Sustainable  
Transport



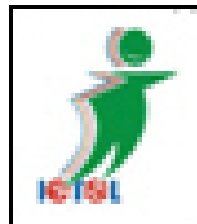
# Performance Monitoring System



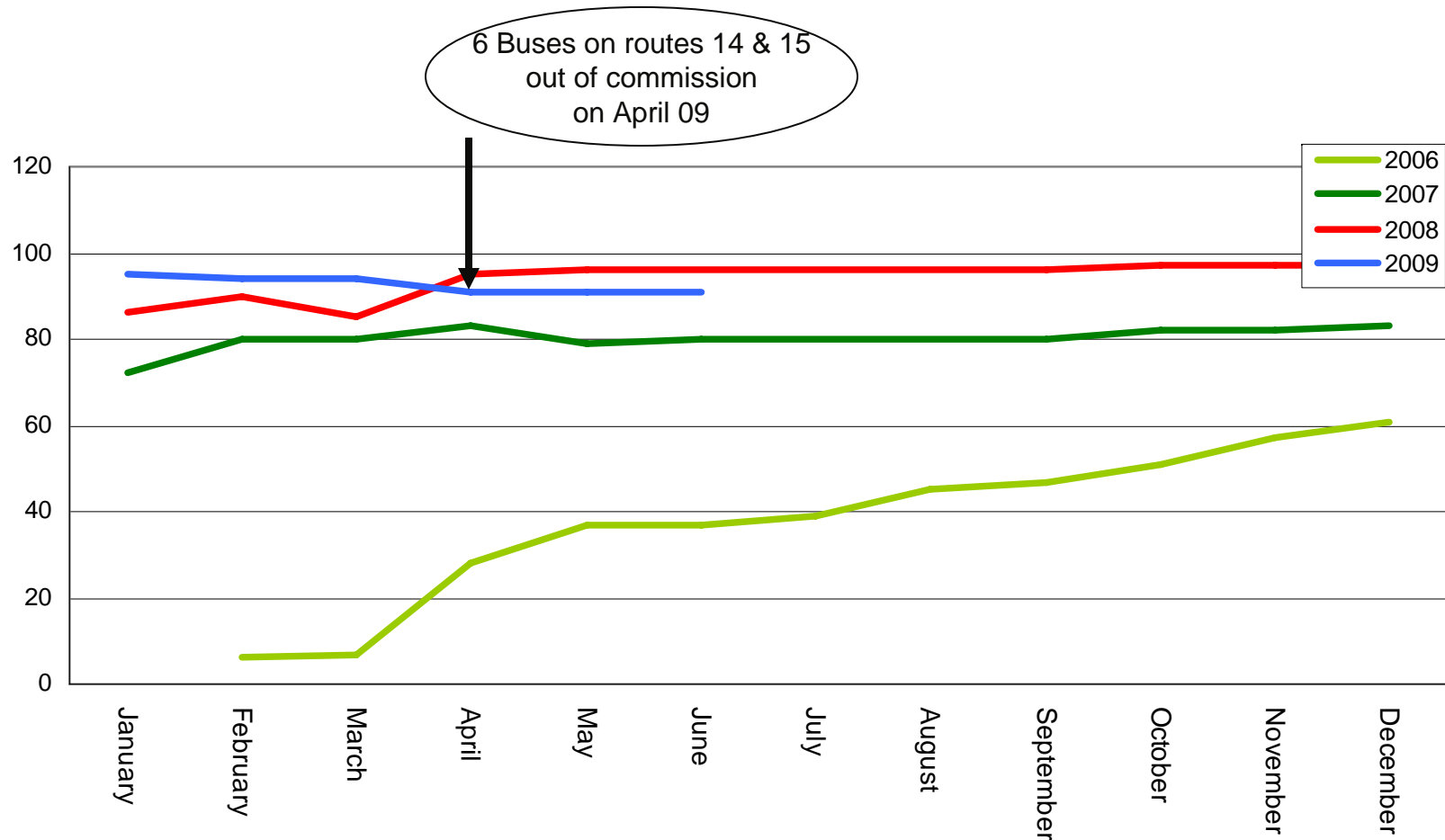
# Patronage : Passengers per Month since Inception



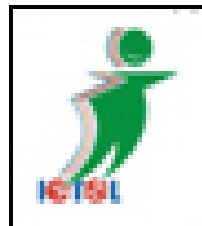
Centre for Sustainable Transport



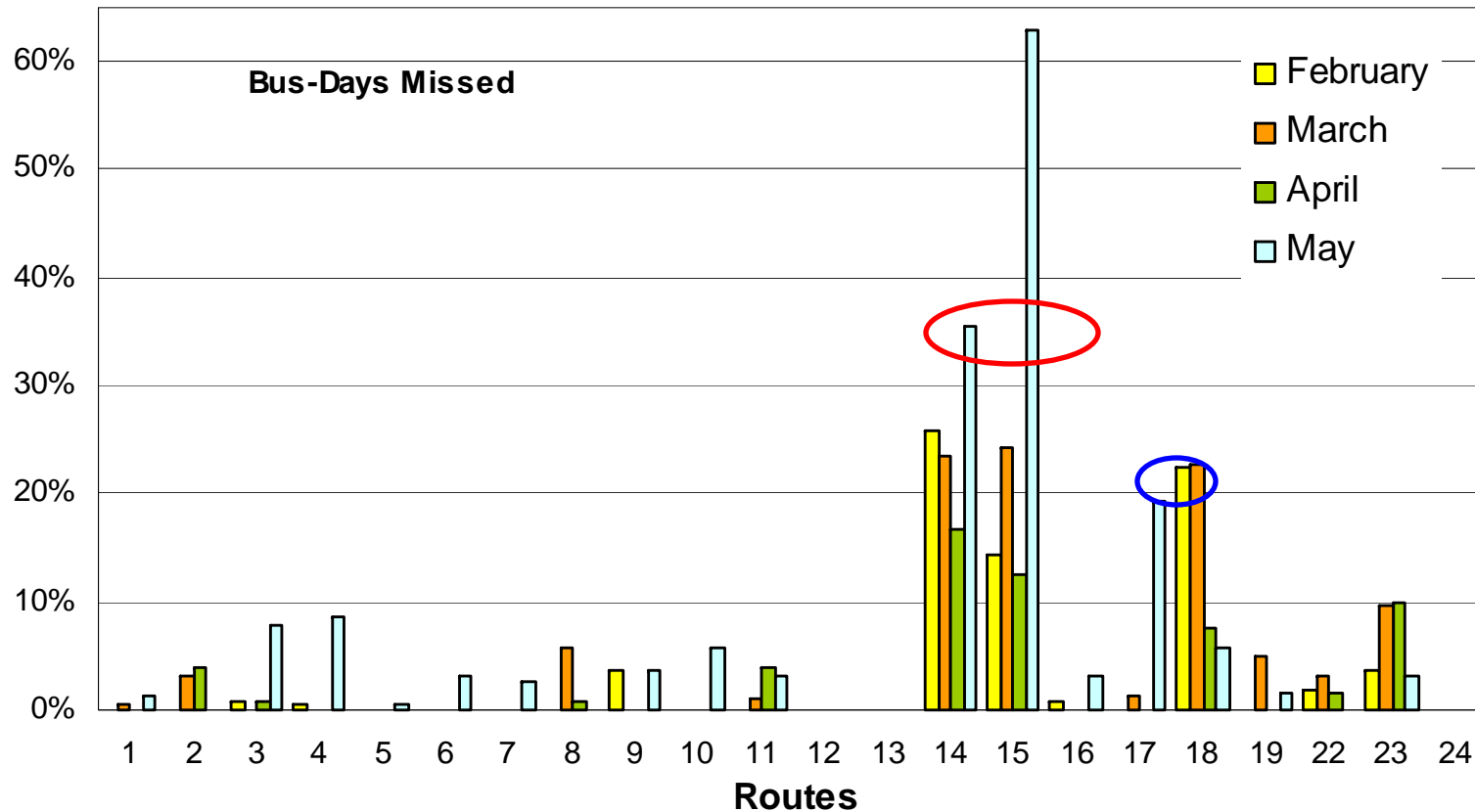
# Patronage : Fleet Size since Inception



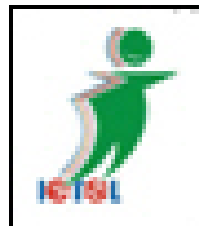
Centre for Sustainable Transport



# Bus Breakdowns – By Route



Centre for Sustainable Transport



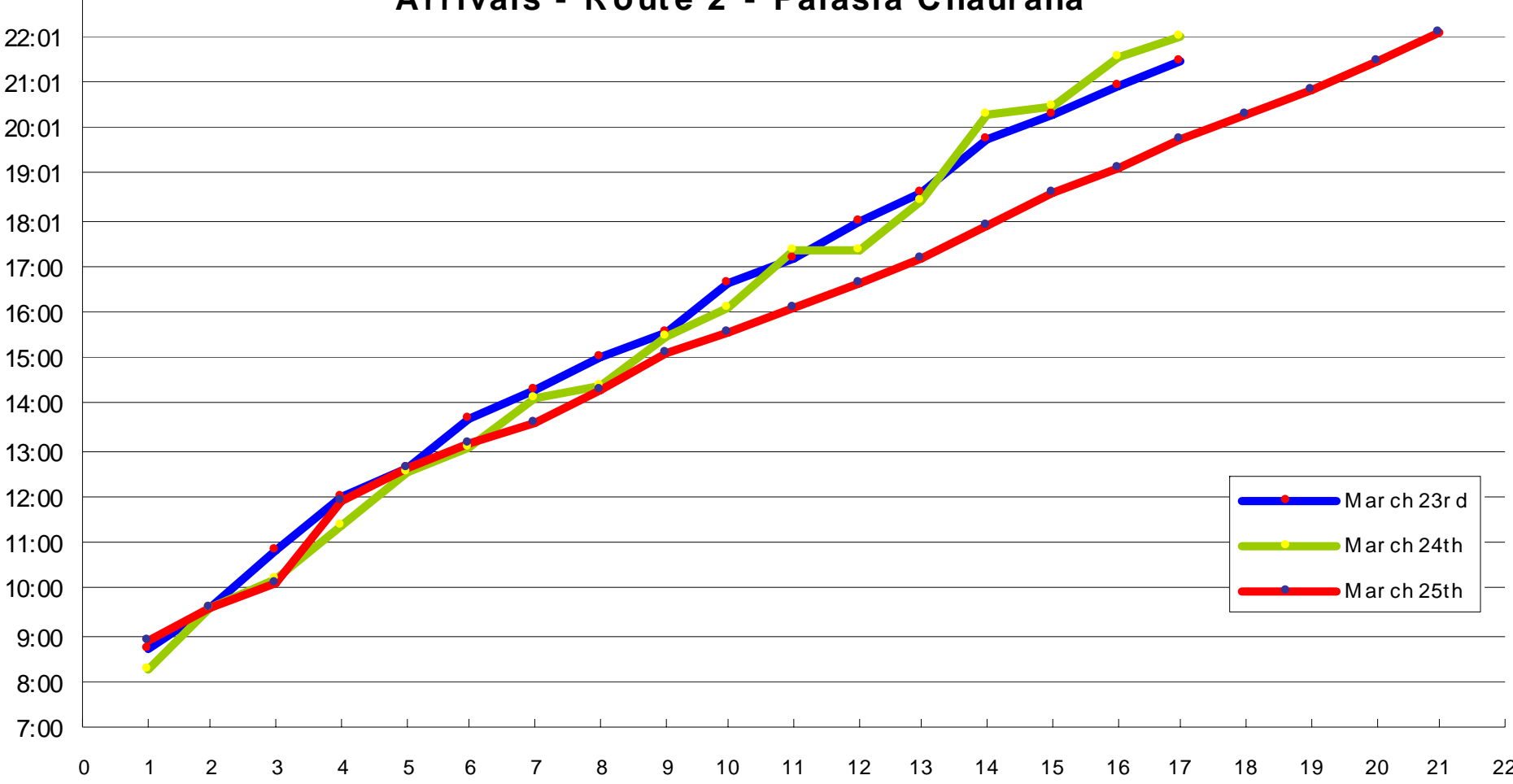
## ROUTE 1 MONTHLY REPORT

No. of buses in operation	5
Route length (in kms)	18.3
No of scheduled trips/ day	<b>48</b>
Bus capacity	70
Scheduled kms/ day	<b>878</b>

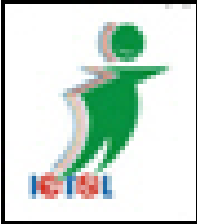
		Fare	Pax	kms travelled	trips operated	missed bus stops	speed violations
Wednesday	day 1	20,237	4,517	<b>985</b>	48	581	39
Thursday	day 2	21,860	4,693	<b>1,002</b>	<b>46</b>	551	40
Friday	day 3	18,325	3,552	<b>498</b>	<b>22</b>	283	36
Saturday	day 4	20,017	4,105	<b>212</b>	<b>16</b>	686	36
Sunday	day 5	18,325	3,841	<b>738</b>	<b>35</b>	611	72
Monday	day 6	23,865	4,846	<b>924</b>	<b>44</b>	625	34
Tuesday	day 7	18,290	4,267	<b>980</b>	<b>47</b>	581	31
Wednesday	day 8	20,975	4,664	<b>969</b>	48	570	33
Thursday	day 9	23,075	4,842	<b>994</b>	48	589	50
Friday	day 10	19,887	4,200	<b>798</b>	<b>40</b>	459	30
Saturday	day 11	21,759	4,718	<b>636</b>	<b>35</b>	517	48
Sunday	day 12	19,527	4,232	<b>718</b>	<b>38</b>	454	23
Monday	day 13	22,090	4,730	<b>956</b>	<b>45</b>	614	105
Tuesday	day 14	19,660	4,450	<b>994</b>	49	575	62
Wednesday	day 15	21,445	4,789	<b>948</b>	<b>34</b>	527	39
Thursday	day 16	22,470	4,686	<b>859</b>	<b>32</b>	590	121
Friday	day 17	20,721	4,489	<b>824</b>	<b>35</b>	491	30
Saturday	day 18	21,350	4,646	<b>784</b>	<b>23</b>	545	30
Sunday	day 19	18,755	4,120	<b>442</b>	<b>16</b>	859	16
Monday	day 20	20,331	4,380	<b>518</b>	<b>23</b>	715	38
		<b>412.964</b>	<b>88.767</b>	<b>15.779</b>	<b>724</b>	<b>11.423</b>	<b>913</b>

# Bus Arrivals – Route 2 – Palasia Chauraha

Arrivals - Route 2 - Palasia Chauraha



Centre for Sustainable Transport



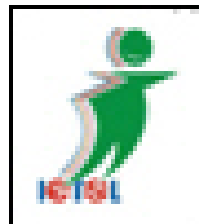
# Financial Assessment of the Existing Operators



Operating Cost Per KM		Capital Cost Per KM	
Mileage (kmpl)	3.5	Cost of bus	2,200,000 rupees
Cost (rspl)	34	Initial Loan Amount	2,200,000
AMC (per km)	2.5	Equity %	30%
		Equity \$	660,000 rupees
Bus km per day	220	Loan amount	660,000 rupees
Bus km per month	5,720	Interest rate	13.50%
		Term of payment	5 years
		No of EMI	60 months
<b>Monthly Expenses</b>		EMI Loan	(15,186) rupees
Premium (Route Concession)	5,000	<b>EMI per KM</b>	<b>2.65 rupees</b>
Insurance + Accident comp.	4,750	Investment	660,000 rupees
Diesel	55,566	Return Rate	15%
Salaries	18,000	Term of payment	5 years
Other expenses	1,000	No of EMI	60 months
Annual Maintenance Contract	14,300	EMI Investment	(15,701)
Tires	8,000	<b>Equity per KM</b>	<b>2.74 rupees</b>
<b>Total Expenses per month</b>	<b>106,616</b>		
		<b>Capital Cost per KM</b>	<b>5.40 per km per bus</b>
<b>Operating cost per km (Rs.)</b>	<b>18.64</b>		



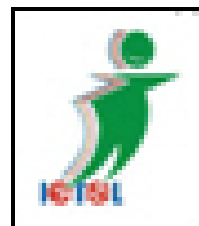
Centre for  
Sustainable  
Transport



Rough cost and revenue calculations for Indore City Bus (Per Bus)								
Route	1	2	3	4	5	6	7	8
Operator	R	D	R	R	R	D	D	R
Mileage (kmpl)	3	3	3	3	3	3	3	3
Cost (rspl)	34	34	34	34	34	34	34	34
AMC (per km)	3.75	3.75	3.75	3.75	3.75	3.75	3.75	3.75
route length	18.30	18.40	21.7	19.3	25.5	13.1	18.3	13.9
bus km per day	205	162	278	174	272	176	220	203
bus km per month	6,251	4,939	8,472	5,298	8,296	5,354	6,698	6,190
<b>Monthly Expenses</b>								
Premium (Route Concession)	0	5,100	0	1,100	0	7,000	1,100	1,100
Insurance + Accident comp.	4,750	4,750	4,750	4,750	4,750	4,750	4,750	4,750
Diesel	70,848	55,970	96,012	60,042	94,021	60,678	75,908	70,150
Salaries	15,000	15,000	15,000	15,000	15,000	15,000	15,000	15,000
Office	1,000	1,000	1,000	1,000	1,000	1,000	1,000	1,000
Annual Maintenance Contract	22,500	22,500	22,500	22,500	22,500	22,500	22,500	22,500
Tyres, Machine rolls, body maint.	8,000	8,000	8,000	8,000	8,000	8,000	8,000	8,000
<b>Total Expenses per month</b>	<b>122,098</b>	<b>112,320</b>	<b>147,262</b>	<b>112,392</b>	<b>145,271</b>	<b>118,928</b>	<b>128,258</b>	<b>122,500</b>
<b>Operating cost per km (Rs.)</b>	<b>19.53</b>	<b>22.74</b>	<b>17.38</b>	<b>21.21</b>	<b>17.51</b>	<b>22.21</b>	<b>19.15</b>	<b>19.79</b>
Capital cost per km (Rs.)	4.94	6.25	3.65	5.83	3.72	5.77	4.61	4.99
<b>Total cost per km (Rs.)</b>	<b>24.47</b>	<b>29.00</b>	<b>21.03</b>	<b>27.04</b>	<b>21.23</b>	<b>27.98</b>	<b>23.76</b>	<b>24.78</b>
fleet	5	5	5	6	6	5	5	5
route km per month	31256	24693	42358	31787	49776	26770	33489	30948
ratio for pass revenue	6%	5%	8%	6%	9%	5%	6%	6%
fare per km (august)	22.52	28.36	19.73	33.69	20.31	24.64	22.24	22.52
pass per km (august)	2.42	2.42	2.42	2.42	2.42	2.42	2.42	2.42
adv per km (august)	1.17	1.48	0.86	1.38	0.88	1.37	1.09	1.18
<b>Revenue per km (Rs.)</b>	<b>26.11</b>	<b>32.27</b>	<b>23.01</b>	<b>37.50</b>	<b>23.62</b>	<b>28.43</b>	<b>25.75</b>	<b>26.12</b>



Centre for  
Sustainable  
Transport



# Bus Procurement

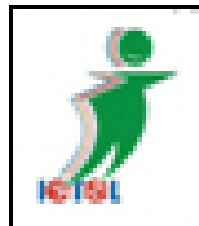


# Bus Operations

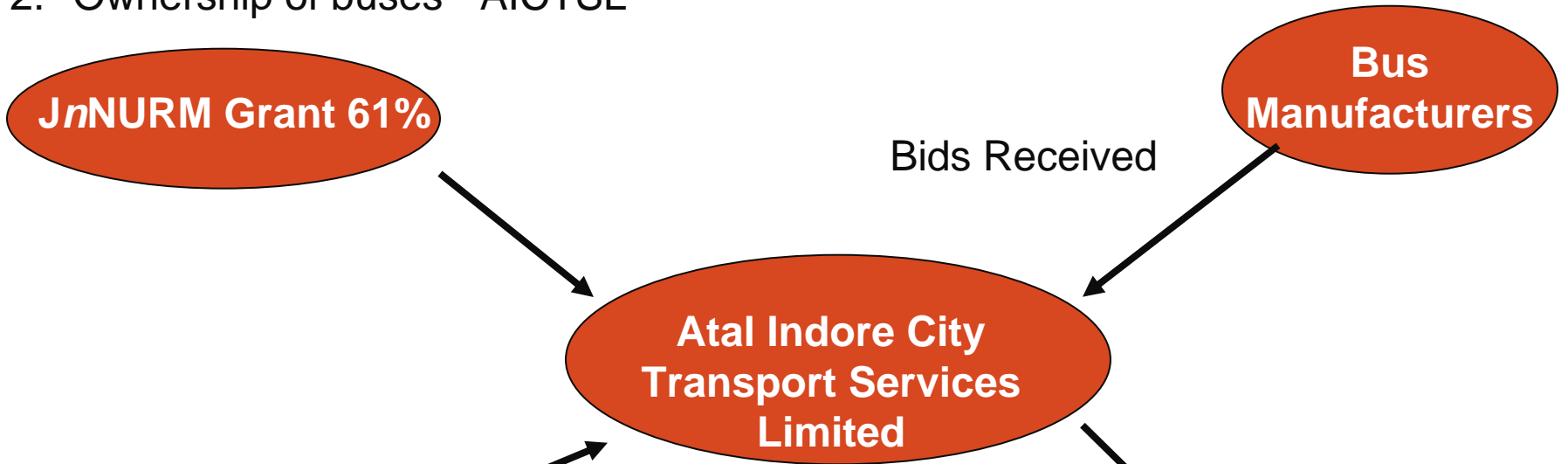
- Approval received for funds of up to Rs. 60 crores to purchase 175 buses for city bus operations (February 2009)
- Tenders for selecting bus manufacturers floated (June 2009)
- Tendering for selection of bus manufacturers including detailed specifications (in-Negotiation)
- Preparation of tender documents for contracting newly procured buses for bus operations (On-going)



Centre for  
Sustainable  
Transport



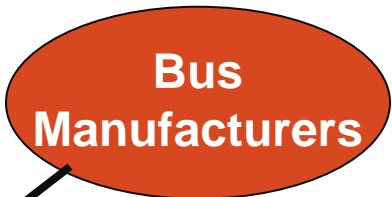
1. Grant Received – Up to 60 Crores
2. Ownership of buses - AICTSL



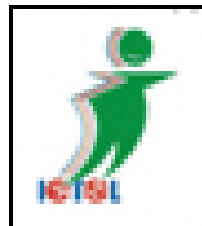
1. Interest Rate
2. Period of Loan
3. Security/Guarantee

Lease Negotiations

1. Monthly Lease Payment
2. Period of Payments (e.g. 5 years, 7 years)
3. Adjustment to existing route premium
4. Security Deposits

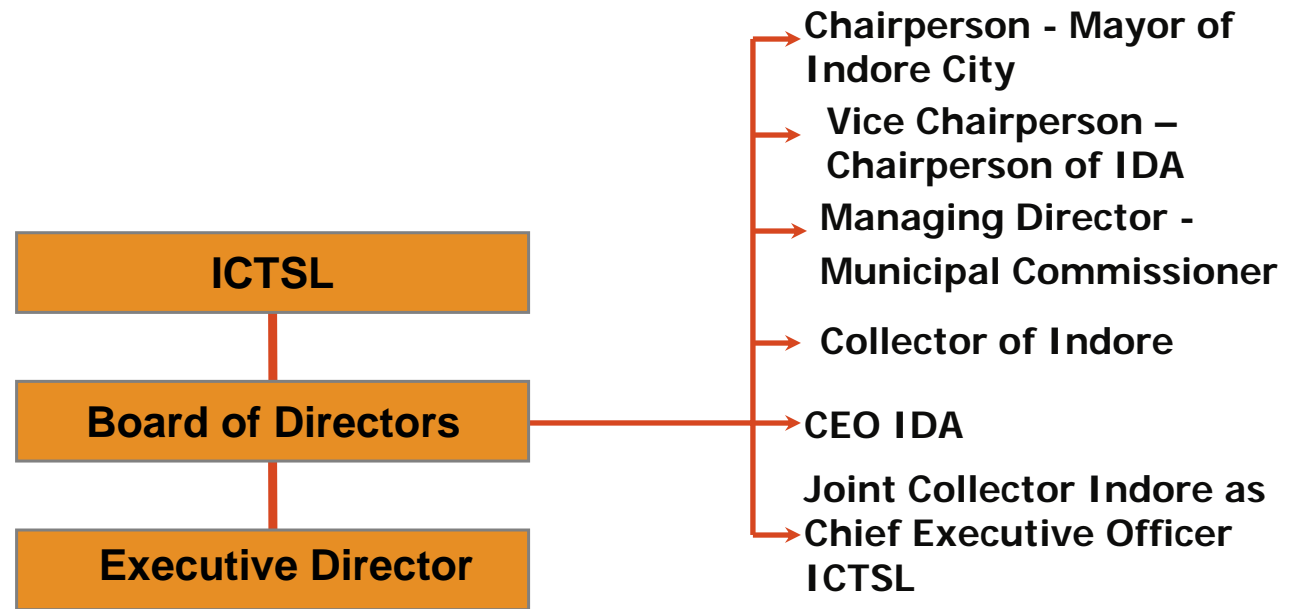


Centre for Sustainable Transport



# Institutional Strengthening



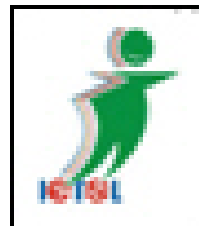


## ORGANIZATION STRUCTURE

\* Strengthening ICTSL, Report prepared in partnership with EMBARQ



Centre for  
Sustainable  
Transport



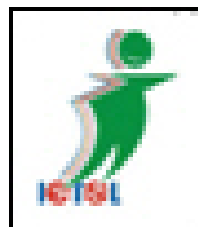
# Current Institutional Structure



\* Strengthening ICTSL, Report prepared in partnership with EMBARQ

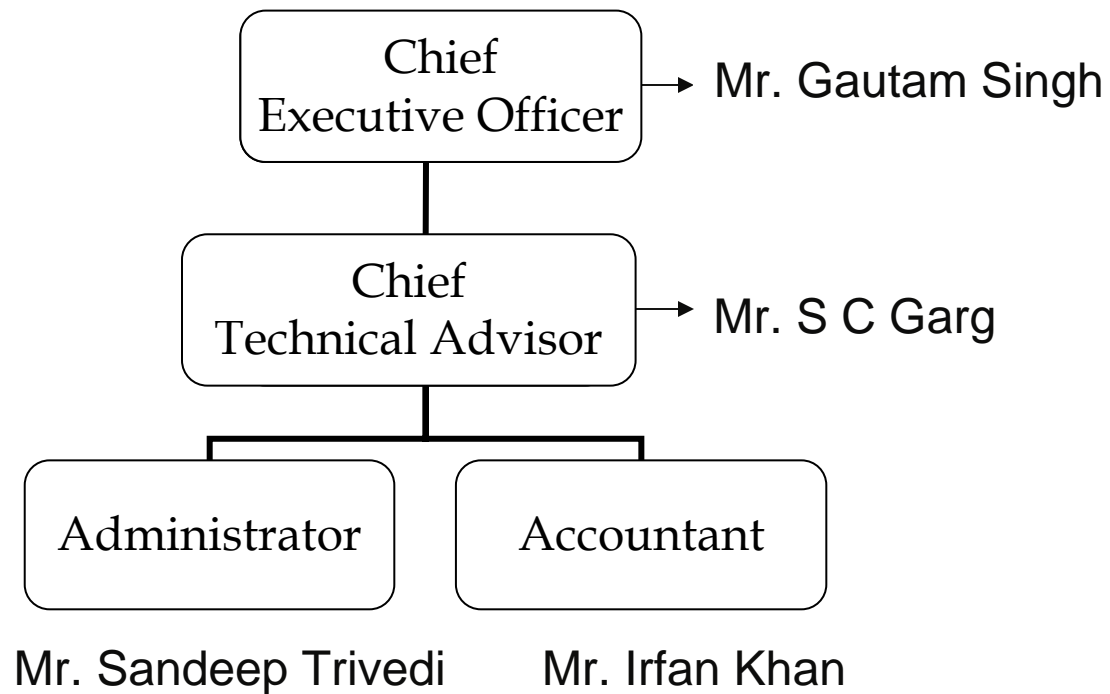


Centre for Sustainable Transport

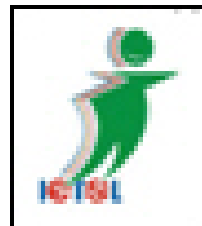


# Current Institutional Structure

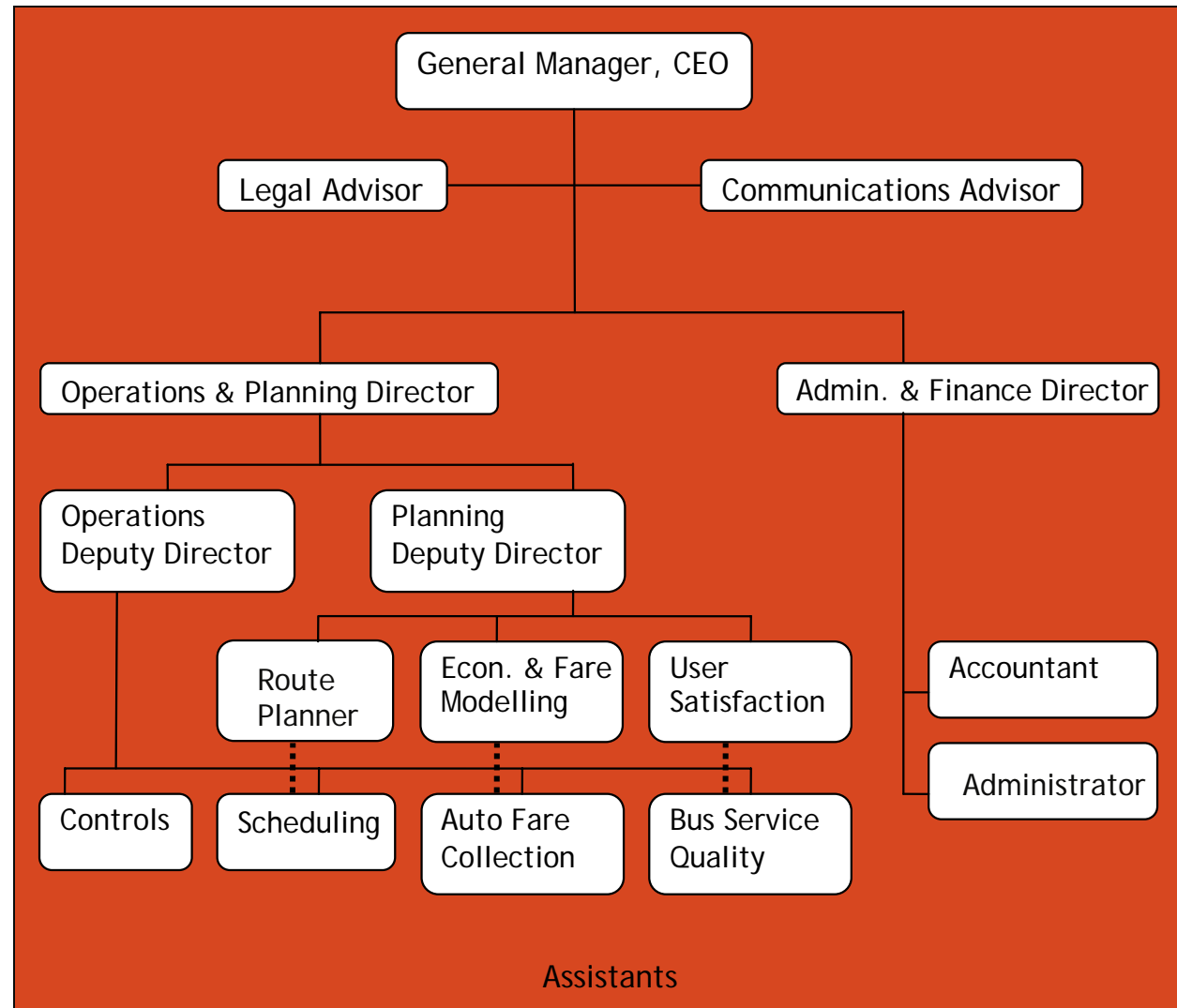
## AICTSL



Sustainable  
Transport



# Proposed Institutional Structure



Centre for Sustainable Transport

\* Strengthening ICTSL, Report prepared in partnership with EMBARQ



# Intelligent Transport Systems

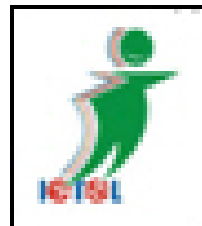


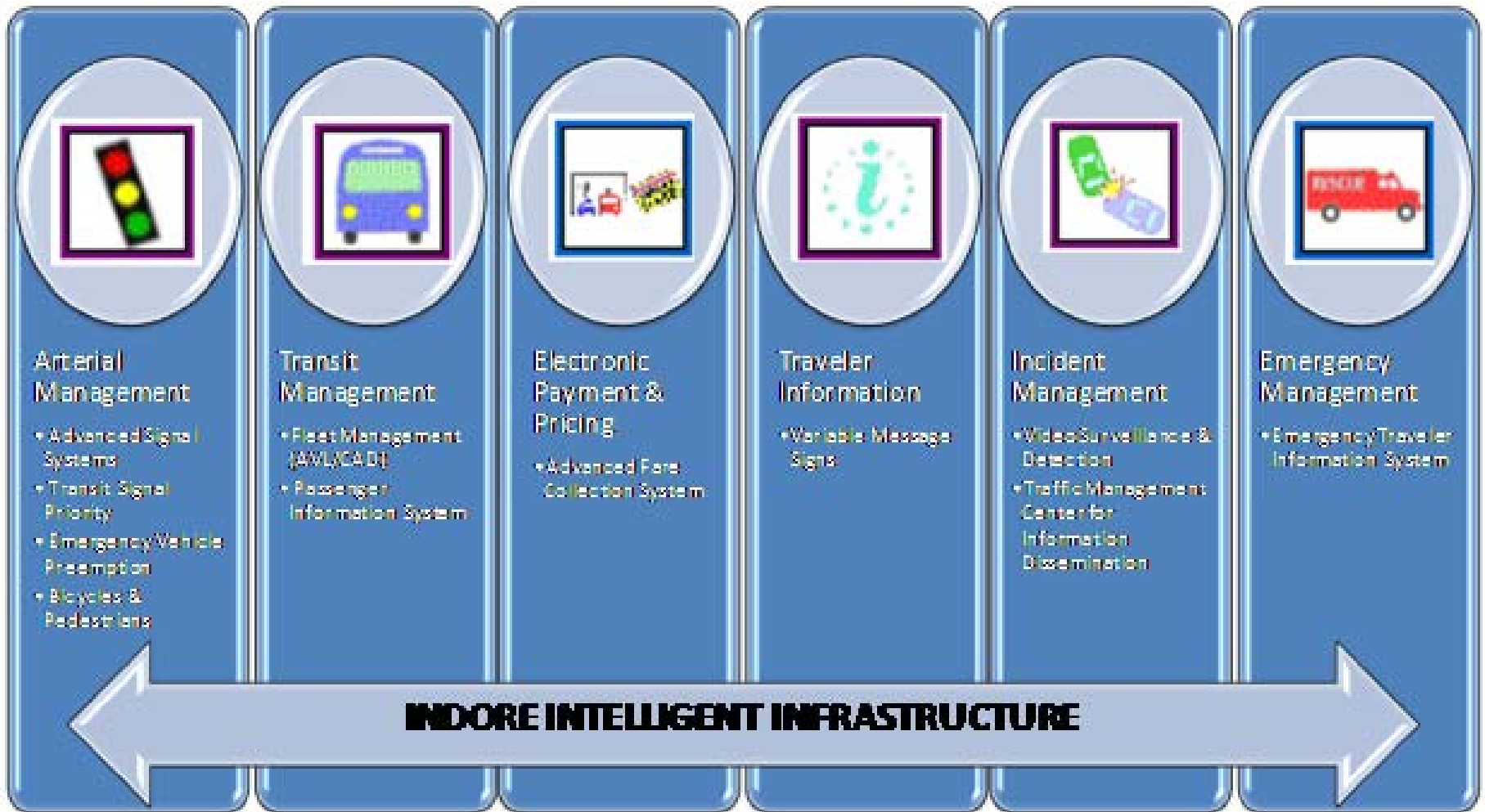
# Intelligent Transportation Systems

- Project approved under the GEF/World Bank/UNDP, sustainable urban transport project (SUTP) (Dec 2008)
- Approval received for funds up to Rs. 47 crores (Feb 2009)  
(22.4 Cr GoI, 81.6 Cr GoMP, 91.3 Cr GEF and 73 Cr ICTSL)
- Tenders for selecting of project management consultant (PMC)  
(Mar 2009)
- Selection process in progress, PMC consultant will be in place by  
(Sep 2009)
- PMC will do
  - Project Design
  - Preparation of procurement documents
  - Engaging a vendor consortium to implement
- Vendor Consortium should be appointed by Apr 2010



Centre for  
Sustainable  
Transport

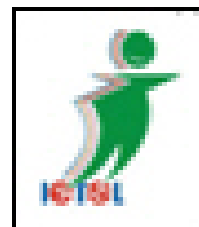




\* DPR submitted to MoUD, SUTP unit



Centre for Sustainable Transport





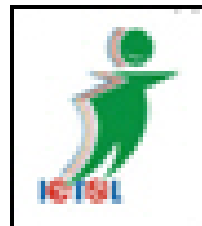
**Carbon Finance  
Under  
Clean Development Mechanism**

# Carbon Finance under CDM

- Working in partnership with Emergent Ventures India Ltd. (EVI)
- Contract with EVI signed (Aug 2007)
- Project development document (PDD) approved by Ministry of Environment & Forestry, GoI
- PDD hosted on the UNFCCC website for 30 days on 28<sup>th</sup> May 2009
- No comments received
- Validation process is on-going (to be completed Jan 2010)
- Expected date for project to register with UNFCCC (May 2010)
- AICTSL should receive 10,000 – 15,000 CER's annually as credit for equivalent to CO<sub>2</sub> savings



Centre for  
Sustainable  
Transport



# Construction of 3 Deport & Installation of CNG Station





Thank You

